

SUN CNC 華勝自動化有限公司

<http://www.sun-cnc.com.tw>

email:sn@sun-cnc.com.tw



台中縣豐原市社皮路 271 巷 9 弄 55 號

TEL:04-25337731

FAX:04-25349224

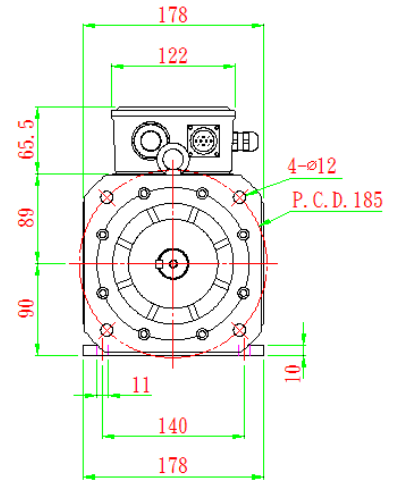
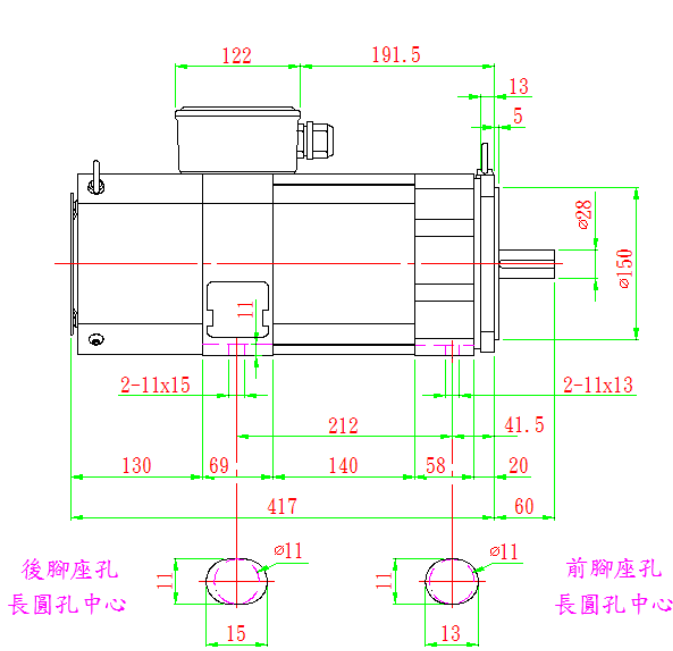
5HP

Motor	SVM-80S	SVM-90S	SVM-90M	SVM-90L
Rated voltage $U_N$	220 / 380	220 / 380	220 / 380	220 / 380
Rated power output $P_N$	0.75kw	1.5kw	2.2kw	3.7kw
Rated speed $N_N$	1500rpm			
Rated torque $M_N$	Nm4.13	Nm9.4	Nm13.88	Nm23.66
Rated current $I_N$	3.28/1.89	6.5/3.7	9.6/5.5	16.1/9.2
Efficiency	0.85			
Max speed $N_{max}$ Standard bearing	8000rpm			
Max current $I_{max}$	6/3.46A	11/6.35A	15.33/8.8A	25/14.4A
Weight	23kg	26kg	30kg	38kg
Rated inertia $J$	60.46kgcm <sup>2</sup>	79.87kgcm <sup>2</sup>	98.82kgcm <sup>2</sup>	135.82kgcm <sup>2</sup>
Protection	IP54			
Fan Rated voltage UL Frequency fL	1Ø220V 50HZ/60HZ			

Motor	Rated speed	Rated power in duty type in accordance		Rated torque	Rated current for duty type		Rated power for duty type		Moment of inertia	Weight
	$M_{rated}$	M2			$I_{rated}$ (220/380v)				J	W
	rpm	S1	S6~60%		S1	S6~60%				
TYPE	rpm	rpm	rpm	Nm	A	A	KW	KW	kgm <sup>2</sup>	kg
SVM-80S-10	1000	4000	3500	3.8	1.76/1.02	2.43/1.4	0.4	0.55	0.0060	23
SVM-80S-15	1500	6000	5000	4.7	3.28/1.89	4.24/2.44	0.75	0.97	0.0060	23
SVM-80S-20	2000	7600	6600	7.1	6.5/3.7	8.5/4.9	1.5	1.95	0.0060	23
SVM-90S-10	1000	4000	3500	7.1	3.2/1.8	4.2/2.4	0.75	0.97	0.0079	26
SVM-90S-15	1500	6000	5000	9.4	6.5/3.7	8.5/4.9	1.5	1.95	0.0079	26
SVM-90S-20	2000	7600	6600	10.4	9.6/5.5	12.5/7.2	2.2	2.86	0.0079	26
SVM-90M-10	1000	4000	3500	14.2	6.5/3.7	8.5/4.9	1.5	1.95	0.0098	30
SVM-90M-15	1500	6000	5000	13.8	9.6/5.5	12.5/7.2	2.2	2.86	0.0098	30
SVM-90M-20	2000	7600	6600	17.5	16.1/9.2	20.9/12	3.7	4.8	0.0098	30
SVM-90L-10	1000	4000	3500	20.8	9.6/5.5	12.5/7.2	2.2	2.86	0.0135	38
SVM-90L-15	1500	6000	5000	23.3	16.1/9.2	20.9/12	3.7	4.8	0.0135	38
SVM-90L-20	2000	7600	5500	26.03	20.3/11.72	31.2/18	5.5	7.15	0.0135	38



外觀尺寸



軸心公差:  $\pm 0.005$   
 引導公差:  $+0$   
 $-0.04$