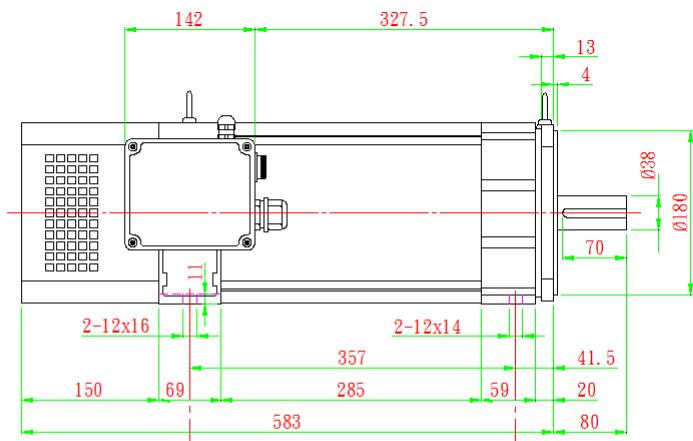


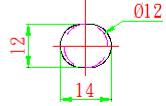
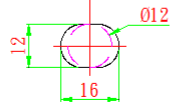


Motor	SVM-100S	SVM-100M	SVM-100L
Rated voltage U_N	220 / 380	220 / 380	220 / 380
Rated power output P_N	5.5kw	7.5kw	11kw
Rated speed N_N	1500rpm		
Rated torque M_N	35.0Nm	47.8Nm	69.4Nm
Rated current I_N	20.3/11.72	27.7/15.9	40.6/23.4
Efficiency	0.85		
Max speed N_{max} Standard bearing	8000rpm		
Max current I_{max}	33/19.0A	36/20.78A	44/25.4A
Weight	51kg	68kg	83kg
Rated inertia J	245kgcm ²	353kgcm ²	405kgcm ²
Protection	IP54		
Fan Rated voltage U_L Frequency f_L	1Ø220V 50HZ/60HZ		

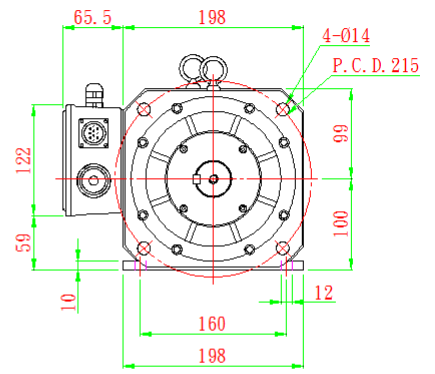
Motor	Rated speed	Rated power in duty type in accordance		Rated torque	Rated current for duty type		Rated power for duty type		Moment of inertia	Weight
	M_{rated}	M2			I_{rated} (220/380v)				J	W
		S1	S6~60%		S1	S6~60%				
TYPE	rpm	rpm	rpm	Nm	A	A	KW	KW	kgm ²	kg
SVM-100S-10	1000	5000	4800	35.5	13.86/8	17.7/10.2	3.75	4.8	0.0245	51
SVM-100S-15	1500	7500	7200	35	20.3/11.72	25.87/14.9	5.5	7	0.0245	51
SVM-100S-20	2000	8000	7680	35.5	27.7/15.9	35.8/20.6	7.5	9.7	0.0245	51
SVM-100M-10	1000	5000	4800	52	20.3/11.7	26.2/15.1	5.5	7.1	0.0353	68
SVM-100M-15	1500	7500	7200	47.8	27.7/15.9	36.2/20.9	7.5	9.8	0.0353	68
SVM-100M-20	2000	8000	7680	52.06	40.6/23.4	52.8/30.4	11	14.3	0.0353	68
SVM-100L-10	1000	5000	4800	71	27.7/15.9	35.8/20.6	7.5	9.7	0.0405	83
SVM-100L-15	1500	7500	7200	69.4	40.6/23.4	51.7/29.8	11	14	0.0405	83
SVM-100L-20	2000	8000	7680	71	55.4/31.9	66.5/38.3	15	18	0.0405	83



後腳座孔
長圓孔中心



前腳座孔
長圓孔中心



軸心公差: ± 0.005

引導公差: $+0$
 -0.04