



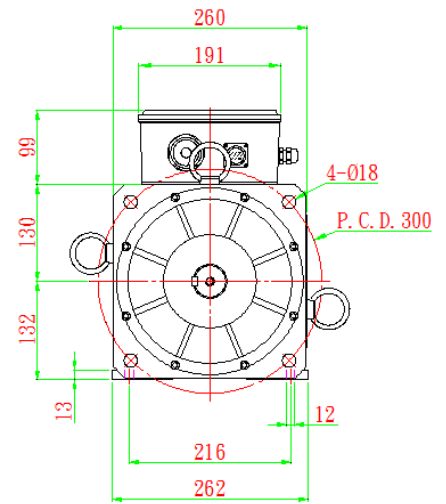
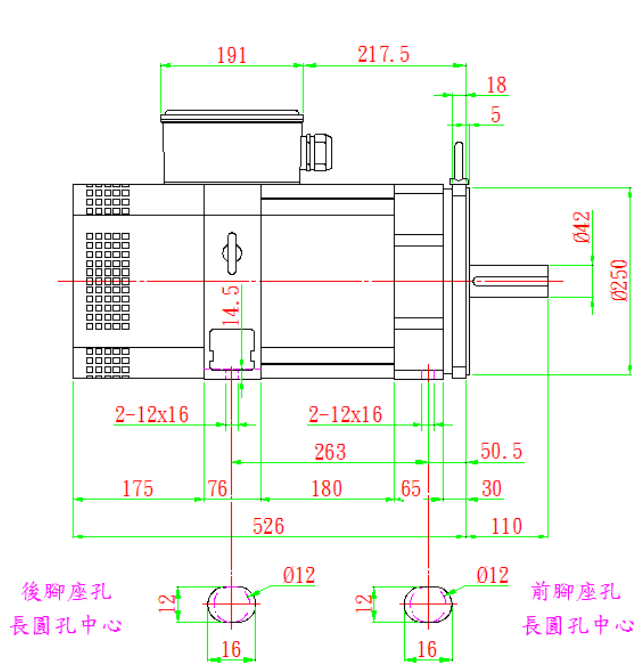
20HP

Motor	SVM-132S	SVM-132M	SVM-132L	SVM-132X
Rated voltage U_N	220 / 380	220 / 380	220 / 380	220 / 380
Rated power output P_N	15kw	18.5kw	22kw	30kw
Rated speed N_N	1500rpm			
Rated torque M_N	94.66 Nm	116.7 Nm	138.84 Nm	189.33 Nm
Rated current I_N	50.08/28.9	62.2/35.9	74/42.7	101/58.3
Efficiency	0.86			
Max speed N_{max} Standard bearing	6000rpm			4500rpm
Max current I_{max}	90/52A	109.4/63.1A	129.4/74.1A	176/101A
Weight	105kg	120kg	152kg	178kg
Rated inertia J	650kgcm ²	770kgcm ²	1010kgcm ²	1200kgcm ²
Protection	IP54			
Fan Rated voltage UL Frequency fL	1Ø220V 50HZ/60HZ			

Motor	Rated speed	Rated power in duty type in accordance		Rated torque	Rated current for duty type		Rated power for duty type		Moment of inertia	Weight
	Mrated	M2			Irated (220/380v)				J	W
		S1	S6~60%		S1	S6~60%				
TYPE	rpm	rpm	rpm	Nm	A	A	KW	KW	kgm ²	kg
SVM-132S-10	1000	4000	4000	104.13	37/21.36	50.08/28.9	11	15	0.065	105
SVM-132S-15	1500	6000	6000	94.66	50.08/28.9	62.2/35.9	15	18.5	0.065	105
SVM-132S-20	2000	6000	6000	87.56	62.2/35.9	74/42.7	18.5	22	0.065	105
SVM-132M-10	1000	4000	4000	142	50.08/28.9	62.2/35.9	15	18.5	0.077	120
SVM-132M-15	1500	6000	6000	116.7	62.2/35.9	74/42.7	18.5	22	0.077	120
SVM-132M-20	2000	6000	6000	104.13	74/42.7	101/58.3	22	30	0.077	120
SVM-132L-10	1000	4000	4000	175.1	62.2/35.9	74/42.7	18.5	22	0.101	152
SVM-132L-15	1500	6000	6000	138.8	74/42.7	101/58.3	22	30	0.101	152
SVM-132L-20	2000	6000	6000	142.00	101/58.3	126/72.8	30	37.5	0.101	152
SVM-132X-10	1000	4000	4000	208.26	74/42.7	101/58.3	22	30	0.126	178
SVM-132X-15	1500	4500	4500	189.33	101/58.3	126/72.8	30	37.5	0.126	178
SVM-132X-20	2000	4500	4500	177.50	126.1/72.8	151.4/87.4	37.5	45	0.126	178



外觀尺寸



軸心公差: ± 0.005
 引導公差: $+0$
 -0.04