

SUN CNC 華勝自動化有限公司

<http://www.sun-cnc.com.tw>

email:sn@sun-cnc.com.tw



台中縣豐原市社皮路 271 巷 9 弄 55 號

TEL:04-25337731

FAX:04-25349224

5HP

Motor	SVM-75S	SVM-75M	SVM-75L
Rated voltage U_N	160 / 280	160 / 280	160 / 280
Rated power output P_N	1.5kw	2.2kw	3.7kw
Rated speed N_N	3000rpm		
Rated torque M_N	4.7Nm	6.94Nm	11.6Nm
Rated current I_N	8.4 / 4.8	12.4 / 7.1	20.8 / 12
Efficiency	0.83		
Max speed N_{max} Standard bearing	24000rpm		
Max current I_{max}	24.6 / 14.2A	41.6 / 24A	61.8 / 35.6A
Weight	17kg	20kg	25kg
Rated inertia J	20kgcm ²	30kgcm ²	42.5kgcm ²
Protection	IP54		
Fan Rated voltage UL Frequency fL	1Ø220V 50HZ/60HZ		

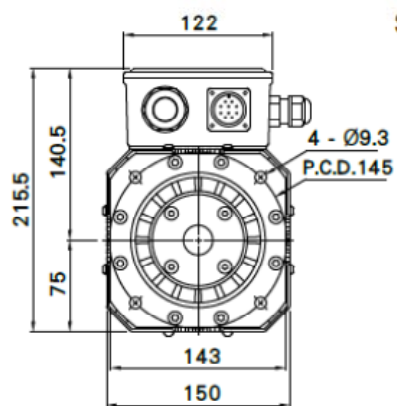
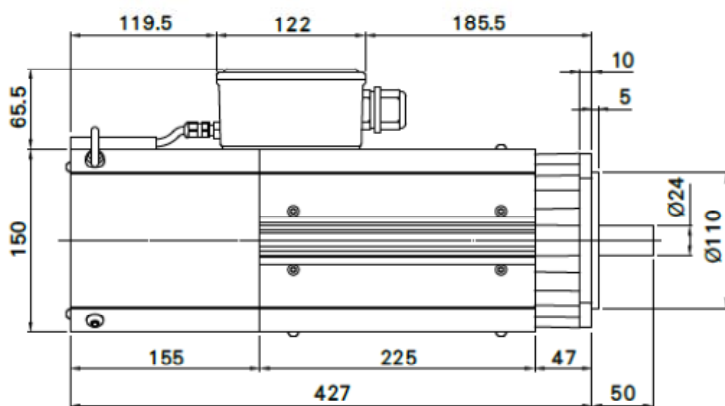
Motor	Rated speed	Rated power in duty type in accordance		Rated torque	Rated current for duty type		Rated power for duty type		Moment of inertia	Weight
	M_{rated}	M2			I_{rated} (160/280v)				J	W
		S1	S6-60%		S1	S6-60%				
TYPE	rpm	rpm	rpm	Nm	A	A	KW	KW	kgm ²	kg
SVM-75S-30	3000	18000	18000	4.7	8.4/4.8	12.3/7.1	1.5	2.2	0.002	17
SVM-75M-30	3000	18000	18000	6.94	12.4/7.1	20.8/12	2.2	3.7	0.003	20
SVM-75L-30	3000	18000	18000	11.6	20.8/12	30.9/17.8	3.7	5.5	0.0042	25

SUN CNC 華勝自動化有限公司
<http://www.sun-cnc.com.tw>
email:sn@sun-cnc.com.tw



台中縣豐原市社皮路 271 巷 9 弄 55 號
TEL:04-25337731
FAX:04-25349224

外觀尺寸



SVM-75L

軸心公差: ± 0.005
引導公差: $+0$
 -0.04