

SUN CNC 華勝自動化有限公司

<http://www.sun-cnc.com.tw>

email:sn@sun-cnc.com.tw



台中縣豐原市社皮路 271 巷 9 弄 55 號

TEL:04-25337731

FAX:04-25349224

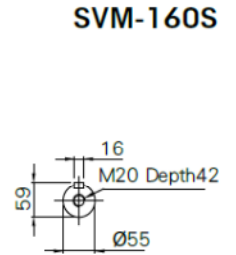
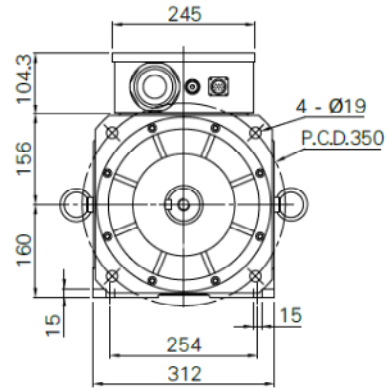
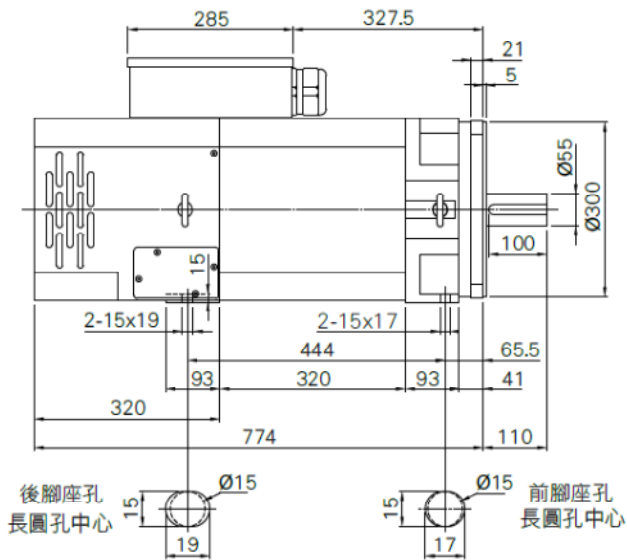
50HP

Motor	SVM-160S	SVM-160M	SVM-160L
Rated voltage U_N	220 / 380	220 / 380	220 / 380
Rated power output P_N	37.5kw	45kw	50kw
Rated speed N_N	1500rpm		
Rated torque M_N	236.67Nm	284Nm	315.5Nm
Rated current I_N	129.45/74.7	155.4/89.7	171.8/99.2
Efficiency	0.92		
Max speed N_{max} Standard bearing	4000rpm		
Max current I_{max}	191.5/110.5A	233.1/134.55A	252.1/144A
Weight	240kg	265kg	282kg
Rated inertia J	1860kgcm ²	2300kgcm ²	2560kgcm ²
Protection	IP54		
Fan Rated voltage U_L Frequency f_L	1Ø220V 50HZ/60HZ		

Motor	Rated speed	Rated power in duty type in accordance		Rated torque	Rated current for duty type		Rated power for duty type		Moment of inertia	Weight
	M_{rated}	M2			I_{rated} (220/380v)				J	W
		S1	S6-60%		S1	S6-60%	S1	S6-60%		
TYPE	rpm	rpm	rpm	Nm	A	A	KW	KW	kgm ²	kg
SVM-160S-10	1000	4000	4000	284	103.6/59.8	129.45/74.7	30	37.5	0.186	240
SVM-160S-15	1500	4000	4000	236.67	129.45/74.7	155.4/89.7	37.5	45	0.186	240
SVM-160S-20	2000	3500	3500	213	155.4/89.7	193.4/111.6	45	56	0.186	240
SVM-160M-10	1000	4000	4000	355	129.45/74.7	155.4/89.7	37.5	45	0.23	265
SVM-160M-15	1500	4000	4000	284	155.4/89.7	193.4/111.6	45	56	0.23	265
SVM-160M-20	2000	3500	3500	260.33	189.9/109.6	234.8/135.5	55	68	0.23	265
SVM-160L-10	1000	4000	4000	378.6	137.58/79.4	178.8/103.2	40	52	0.256	282
SVM-160L-15	1500	4000	4000	315.5	171.8/99.2	223.5/129.0	50	65	0.256	282
SVM-160L-20	2000	3200	2800	293.47	213.2/123	275/158.37	62	80	0.256	282



外觀尺寸



SVM-160S

軸心公差: ± 0.005
 引導公差: $+0$
 -0.04